

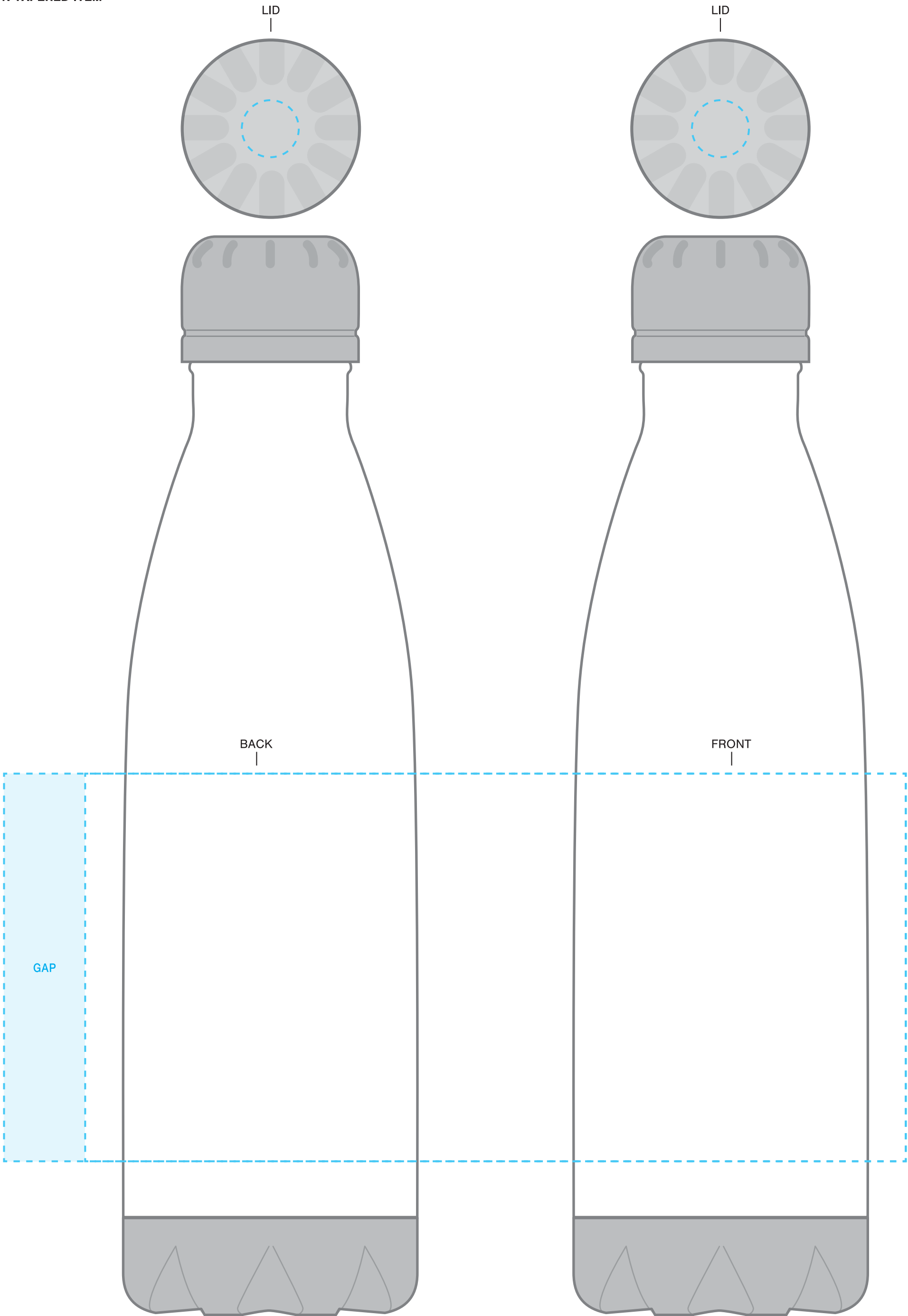
SCREENPRINT

IMPRINT AT 100%

INSTRUCTIONS:

- 1. OPEN TEMPLATE IN ADOBE ILLUSTRATOR OR YOUR PREFERRED GRAPHICS EDITOR.
- 2. PLACE ARTWORK IN DESIGNATED AREA.
- 3. SUBMIT YOUR FINAL DESIGN TO OUR VIRTUAL TEAM FOR MOCKUPS OR DIRECTLY TO OUR ORDER PROCESSING TEAM FOR PROOFS.

****CIRCLES/SQUARES WILL WARP ON TAPERED ITEM****



26 OZ H2GO® FORCE

AVAILABLE IMPRINT AREA = 4.25" h x 3" w x 9" wrap
[9.89" full wrap when printing more than one color]
LID IMPRINT AREA = 0.625"ø

NOT A PROOF — FOR CONCEPT PURPOSES ONLY

DESIGNATE PMS# TO CORRESPONDING COLOR #. USE PMS COLORS AND OUTLINE ANY FONTS BEFORE SUBMITTING WITH YOUR ORDER.

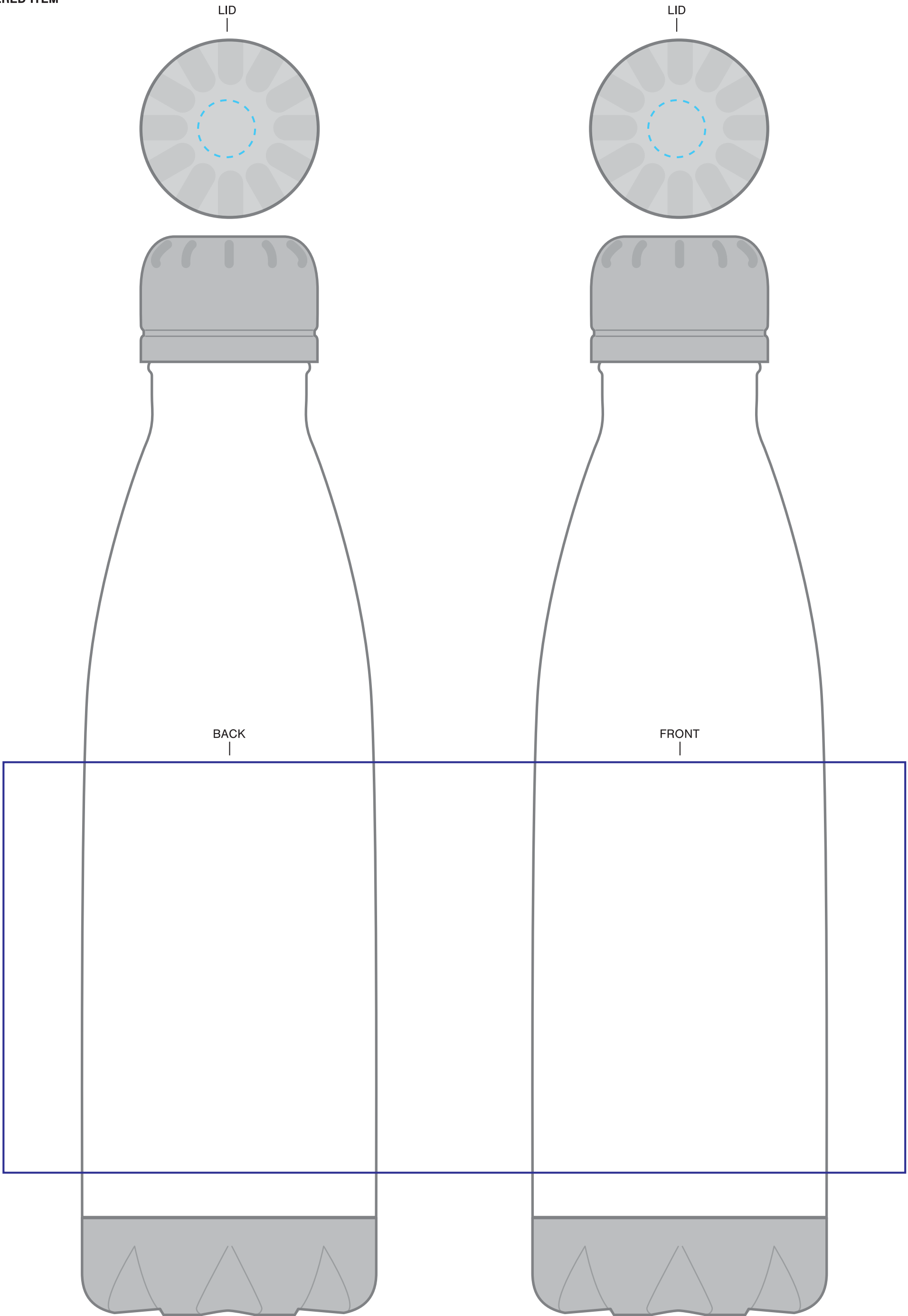
D4

IMPRINT AT 100%

INSTRUCTIONS:

- 1. OPEN TEMPLATE IN ADOBE ILLUSTRATOR OR YOUR PREFERRED GRAPHICS EDITOR.
- 2. PLACE ARTWORK IN DESIGNATED AREA.
- 3. SUBMIT YOUR FINAL DESIGN TO OUR VIRTUAL TEAM FOR MOCKUPS OR DIRECTLY TO OUR ORDER PROCESSING TEAM FOR PROOFS.

****CIRCLES/SQUARES WILL WARP ON TAPERED ITEM****



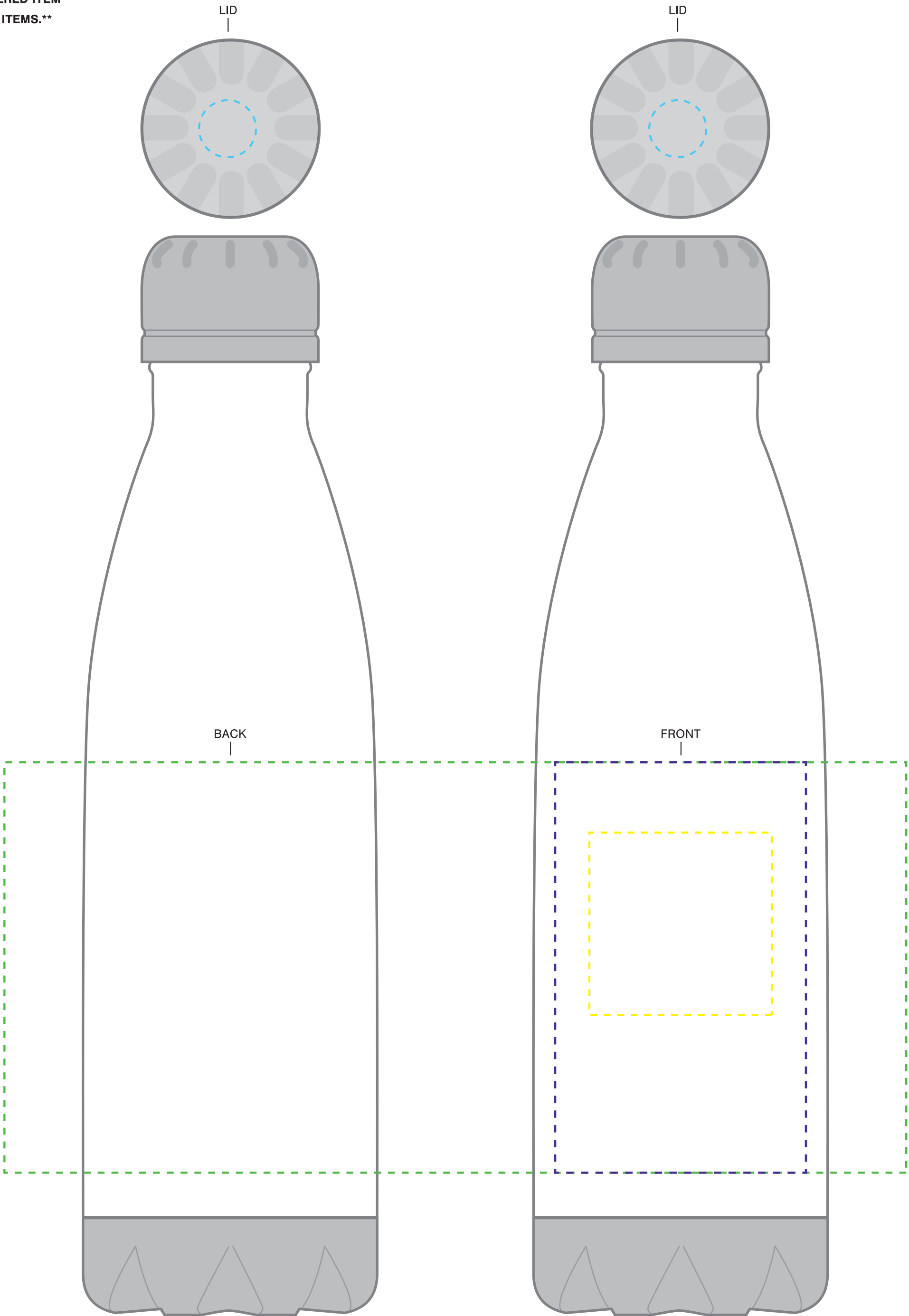
26 OZ H2GO® FORCE
D4 AVAILABLE IMPRINT AREA = 4.5" h x 3" w x 9.89" wrap
LID IMPRINT AREA = 0.625"ø

NOT A PROOF — FOR CONCEPT PURPOSES ONLY
DESIGNATE PMS# TO CORRESPONDING COLOR #. USE PMS COLORS AND OUTLINE ANY FONTS BEFORE SUBMITTING WITH YOUR ORDER.

INSTRUCTIONS:

- 1. OPEN TEMPLATE IN ADOBE ILLUSTRATOR OR YOUR PREFERRED GRAPHICS EDITOR.
- 2. PLACE ARTWORK IN DESIGNATED AREA.
- 3. SUBMIT YOUR FINAL DESIGN TO OUR VIRTUAL TEAM FOR MOCKUPS OR DIRECTLY TO OUR ORDER PROCESSING TEAM FOR PROOFS.

****CIRCLES/SQUARES WILL WARP ON TAPERED ITEM****
****LASERX NOT AVAILABLE ON STAINLESS ITEMS.****



26 OZ H2GO® FORCE
LASERX AVAILABLE IMPRINT AREA = 2" h x 2" w ONE SIDE ONLY
LASERX+ AVAILABLE IMPRINT AREA = 4.5" h x 2.75" w
LASERX360 AVAILABLE IMPRINT AREA = 4.5" h x 3" w x 9.89" wrap
LID IMPRINT AREA = 0.625"ø

NOT A PROOF — FOR CONCEPT PURPOSES ONLY
DESIGNATE PMS# TO CORRESPONDING COLOR #. USE PMS COLORS AND OUTLINE ANY FONTS BEFORE SUBMITTING WITH YOUR ORDER.

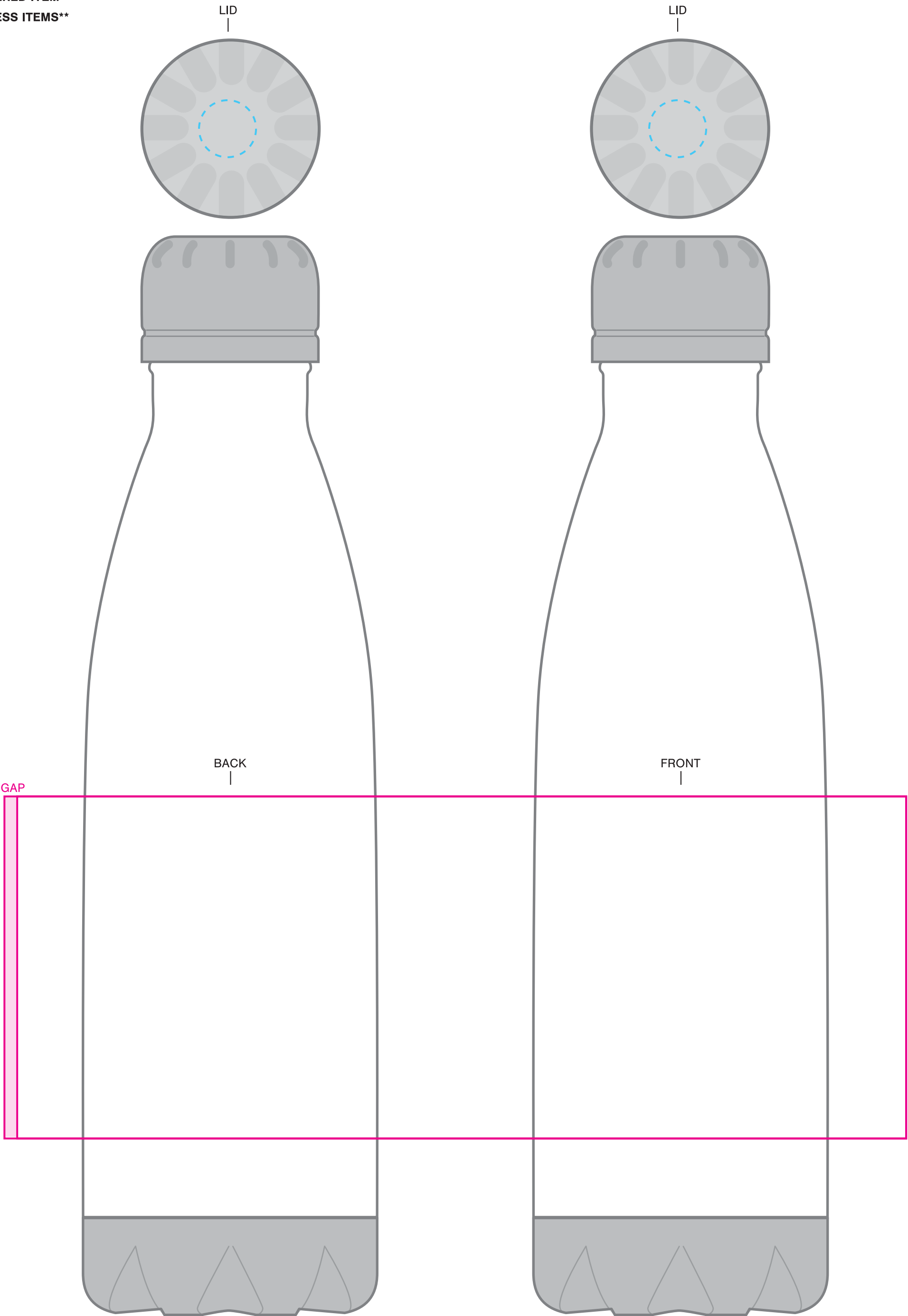
H4

IMPRINT AT 100%

INSTRUCTIONS:

- 1. OPEN TEMPLATE IN ADOBE ILLUSTRATOR OR YOUR PREFERRED GRAPHICS EDITOR.
- 2. PLACE ARTWORK IN DESIGNATED AREA.
- 3. SUBMIT YOUR FINAL DESIGN TO OUR VIRTUAL TEAM FOR MOCKUPS OR DIRECTLY TO OUR ORDER PROCESSING TEAM FOR PROOFS.**

****CIRCLES/SQUARES WILL WARP ON TAPERED ITEM****
****H4 NOT AVAILABLE FOR MATTE/STAINLESS ITEMS****



26 OZ H2GO® FORCE
H4 AVAILABLE IMPRINT AREA = 3.75" h x 3" w x 9.75" wrap
LID IMPRINT AREA = 0.625"ø

NOT A PROOF — FOR CONCEPT PURPOSES ONLY
DESIGNATE PMS# TO CORRESPONDING COLOR #. USE PMS COLORS AND OUTLINE ANY FONTS BEFORE SUBMITTING WITH YOUR ORDER.

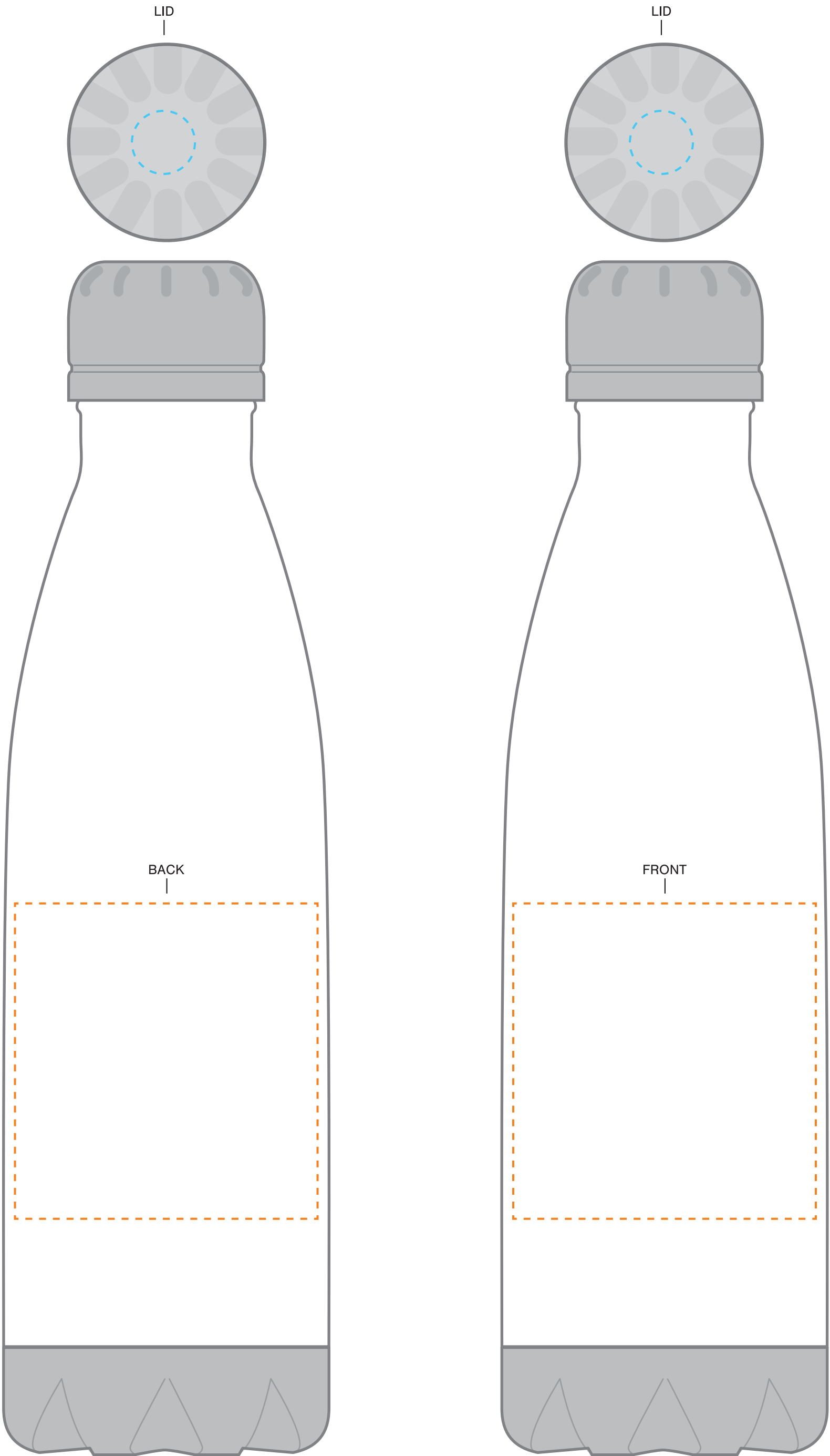
FOIL

IMPRINT AT 100%

INSTRUCTIONS:

- 1. OPEN TEMPLATE IN ADOBE ILLUSTRATOR OR YOUR PREFERRED GRAPHICS EDITOR.
- 2. PLACE ARTWORK IN DESIGNATED AREA.
- 3. SUBMIT YOUR FINAL DESIGN TO OUR VIRTUAL TEAM FOR MOCKUPS OR DIRECTLY TO OUR ORDER PROCESSING TEAM FOR PROOFS.

****CIRCLES/SQUARES WILL WARP ON TAPERED ITEM****



26 OZ H2GO® FORCE
FOIL AVAILABLE IMPRINT AREA = 3.125" h x 3" w ONE -OR- TWO SIDED ONLY
LID IMPRINT AREA = 0.625"ø

NOT A PROOF — FOR CONCEPT PURPOSES ONLY
DESIGNATE PMS# TO CORRESPONDING COLOR #. USE PMS COLORS AND OUTLINE ANY FONTS BEFORE SUBMITTING WITH YOUR ORDER.